

Refrigeration Equipment 2-Door Sandwich/Salad Prep Table 61" Long 16-1/6 Pan

ITEM # _____

MODEL # _____

NAME # _____

SIS # _____

AIA # _____



738257 (KCHST60.16)

2-Door Sandwich/Salad Prep
Table 61" Long 16-1/6 Pan

Short Form Specification

Item No. _____

2-door sandwich/salad refrigerated preparation table. Exterior back panel and exterior bottom panel in galvanized steel, exterior side and top panels in 430 stainless steel; interior back, top panels and interior bottom panel in 304 stainless steel, worktop in 304 stainless steel. Built-in refrigeration unit and an insulated lid to maintain food freshness. Fin & Tube Condenser improves performance in high-temperature environments. Automatic Defrost Cooling System to provide worry-free performances. Full-depth cutting board of 61x11.4x0.5 in. Control panel, Vinyl-Coated Steel adjustable shelves, removable door gaskets and self-closing doors with 90-degree stay-open feature. Temperature range: +33/+41°F. R290 gas in the refrigeration circuit. ETL Safety and Sanitation certifications. 3/5 Years warranty.

Main Features

- External temperature display.
- Removable gasket for easy cleaning operations.
- Fin & Tube Condenser improves performance in high temperature environments.
- Automatic Defrost Cooling System provides worry-free performance.
- Electronic Temperature Control, quick and simple to set, with control display for easy monitoring.
- Full Depth cutting board.
- Cabinet completely insulated with high density polyurethane for low environmental impact.
- Heavy duty Vinyl coated steel shelves.
- Adjustable shelves for flexible storage
- Removable rubber bumper guards for airflow spacing and shock absorption
- Back bottom mounted cooling unit guarantee an easy access and cleaning.
- Integrated polyethylene (PE) cutting board included for food-safe, durable prep surface

Construction

- Stainless steel interior and exterior, durable and easy to clean for daily commercial use.
- White polystyrene interior side panels, for high impact resistance
- Holds 16 1/6 pans.
- Insulated lid maintains food freshness.
- Heavy duty casters.
- Pre-wired heavy duty power cord.
- Heavy duty door hinges.
- Magnetic gasket removable without tools for easy cleaning.
- Self-closing door with 90-degree stay-open feature.
- Stainless steel worktop, durable functionality

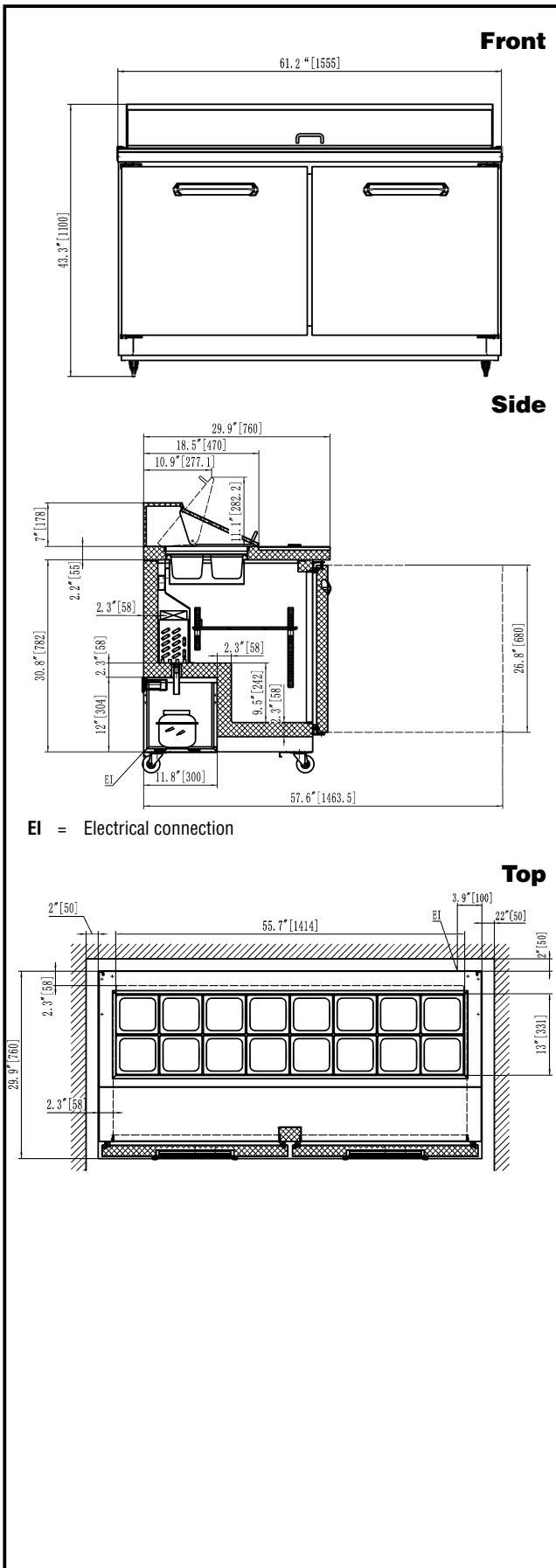
Sustainability

- CFC and HCFC free, highly ecological refrigerant type: R290 (ecological gas in foam: cyclopentane). Hydrocarbon refrigerant gas R290 for the lowest environmental impact (GWP=3), to reduce green house and ozone depletion effects.
- High efficiency components to minimize the energy consumption still guaranteeing the highest performances.
- Hydrocarbon refrigerant gas R290 for the lowest environmental impact (GWP=3) - CFC and HCFC free.
- 58 mm insulation for energy saving

Optional Accessories

- Shelf (left/right) for 60" Mega Top, Salad Top, Undercounter, and Worktop PNC 880596
- Shelf clips (4-pack) PNC 880611

APPROVAL: _____



Electric

| | |
|------------------------|------------------|
| Supply voltage: | 115 V/1 ph/60 Hz |
| Electrical power, max: | 0.78 kW |
| Plug type: | USA NEMA 5-15P |

Capacity:

| | |
|-----------------|--------------|
| Gross capacity: | 15.5 cu.feet |
|-----------------|--------------|

Key Information:

| | |
|--|--|
| Number and type of grids (included): | 2 - Vinyl-Coated steel |
| Number and type of pans (included): | 16 - Plastic |
| Number and type of cutting board (included): | 1 - Polyethylene (PE) |
| Warranty: | 3 / 5 years |
| Door hinges: | 1 Left+1 Right |
| External dimensions, Width: | 61 1/4" (1555 mm) |
| External dimensions, Depth: | 29 15/16" (760 mm) |
| External dimensions, Height: | 43 5/16" (1100 mm) |
| Number and type of doors: | 2 Full |
| Internal Dimensions (depth): | 23 13/16" / (605 mm) |
| Internal Dimensions (height): | 23 1/2" / (597 mm) |
| Internal Dimensions (width): | 56 1/4" / (1429 mm) |
| Shipping height: | 47 1/4" (1200 mm) |
| Shipping weight: | 392 lbs (178 kg) |
| Shipping volume: | 54.07 ft ³ (1.53 m ³) |
| Type of external material: | Stainless Steel |
| Type of internal material: | Polystyrene |
| Approvals | ETL C&US;ETL SANITATION |

Refrigeration Data

| | |
|-----------------------------|--------------|
| Condenser type: | Fin & tube |
| Operating temperature min.: | 32 °F |
| Compressor power: | 1/3 hp |
| Operating temperature max.: | 41 °F |
| Defrost type: | Auto Defrost |

Sustainability

| | |
|----------------------|----------|
| Current consumption: | 4.3 Amps |
| Refrigerant type: | R290 |
| GWP Index: | 3 |
| Refrigerant weight: | 90 g |